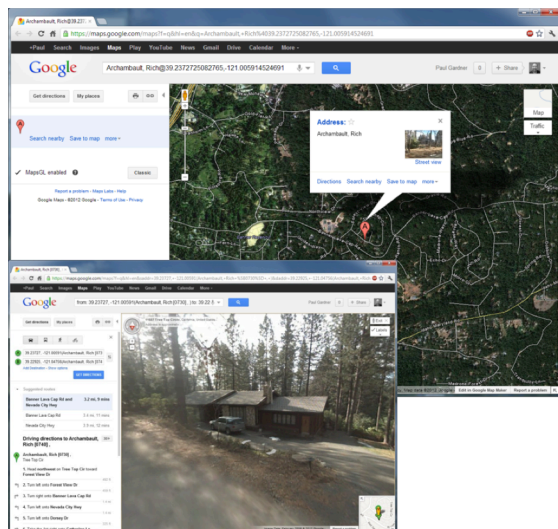




Easy Rides Basic^{GIS}



Designed for small to medium sized systems, **Easy Rides Basic^{GIS}** has all the features you'll need in an affordable, easy to use package.

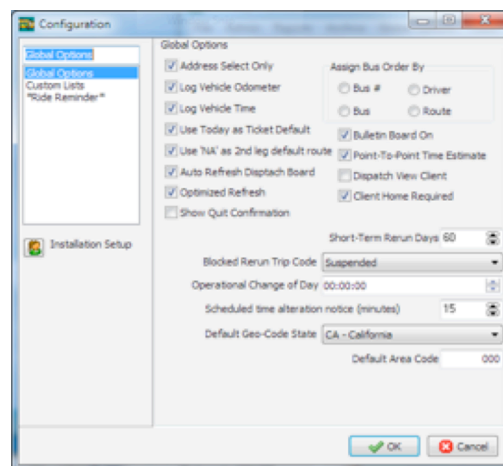
Easy Rides Basic^{GIS} has the exact features of Easy Rides Basic, plus all the benefits of integration with Microsoft MapPoint for location awareness. It also includes Trip Validation, an enhanced dispatch board with a staging area, Route Parameter Replication (RPR) for simplified scheduling and a Rides Analyzer tool to quickly get the data you need.

Based on Microsoft SQL Server technology, the Easy Rides database is open for customers to develop their own analysis and reports using MS Access, Crystal Reports, etc. In addition, Easy Rides provides export capabilities to Excel, an enhanced Report Generator, and four standard reports.

Easy Rides Basic² can filter the types of tickets that can be assigned to specified vehicles and runs. Runs and vehicles may be reserved for certain funders, providers, and custom parameters specified by the user. You can also check to see if seats and/or wheelchair slots are available before assigning a requested trip.

Tricks & Tips

Configuration Settings for ERUtility



Whether you're new or experienced with Easy Rides, you might not be aware of what the different settings and options are in Easy Rides and the Easy Rides Utility. Here are just a few:

Address Select Only - This should ALWAYS be enabled (checked) as it prevents users from being able to type in anything they want into an address field of a trip ticket without checking or adding it into the database. Someday, we'll remove the option altogether.

Log Vehicle Odometer, Log Vehicle Time - We're not sure why you wouldn't want to log vehicle odometers and times for routes.

Auto Refresh Dispatch Board - As is sounds, this option automatically refreshes the board every 30 seconds. Unless you really enjoy pressing the Refresh button and don't like to see changes made by other users until you ask, then you should probably leave this option enabled.

More fun on page 2



Use Today as Ticket Default - Sets the date in new trip forms to today's date by default. This is usually the preferred method for most organizations because you always know that the date on the ticket is going to need to be changed unless it's for today. If you uncheck this option, the date will be whatever you used on the last trip ticket. This might be useful if you've got a large list of tickets for a certain day that you're entering all at once.

Optimized Refresh - This one will speed up the opening of Easy Rides and loading of schedules, but there's a catch. If any workstations clocks do not have the exact time as the server, you may not see trip tickets that you or someone else has recently changed on the schedule board. Unless your computer IS the server or you know for certain that all of the workstations on the network are perfectly synchronized with the server's clock it's generally better to leave this option disabled (unchecked).

Spotlight: 2012 Tri-State Conference



Earlier this month, Cliff Hales attended the Tri-State Conference in Meredith, New Hampshire on Lake Winnepesaukee. It was a great conference; we were able to demonstrate our Tablet-based driver manifest feature to many people and spent a great evening cruising the lake on the M/S Mount Washington.

It was especially nice to visit with all of our friends who came from Maine. Thank you to everyone who participated.

Upcoming Training

Sept. 27: "New Features in Easy Rides Release 4"
October 25: TBD

Upcoming Conferences

October 3-5 – INCOST, Indianapolis, IN
October 14-17 – Rural TRB, Salt Lake City, UT

Contact Us

If you need to change your email address, would like to subscribe or unsubscribe from the newsletter or have a suggestion, email us at: newsletters@mobilitat.com or call us toll free at 888-806-6595

Follow Us

Follow us on Facebook and Twitter!



/mobilitat



#mobilitat